

The German Longhaired Pointer Club

(provisional)

NEWSLETTER



Printed by J C Graphics
Tel: 01977 671368 Email: jc.graphics@virgin.net

AUTUMN 2004

Committee

2004/2005

Chairman

David Winser
Pointers
Wistow
Huntingdon
Cambs. PE28 2QH
Tel/Fax: 01487 822366
Email: david@winser.go-plus.net

Vice Chairman

Sheila Kuban
The Hawks Nest
Prey Heath
Mayford
Woking
Surrey. GU22 0SL
Tel: 01483 763538

Honorary Secretary/Treasurer

Eileen Winser
Pointers
Wistow
Huntingdon
Cambs. PE28 2QH
Tel/Fax: 01487 822366
Email: eileen@winser.go-plus.net

Newsletter Editor/ Committee Member

Sarah Bond
The Willows
Mill Road
Buxhall
Stowmarket
Suffolk. IP14 3DW
Tel: 01449 736544

Committee Member

Rob Gould
Wamil Hythe
The Street
Worlington
Bury St Edmunds
Suffolk. IP28 8RX
Tel: 01638 717871
Email: rob@glp.demon.co.uk

From the Chairman

Welcome to another newsletter from the German Longhaired Pointer Club. In past offerings I have used the word 'success' many times, and justifiably so. Now, the fact that 5 out of the 12 Longhairs entered in the last working test figured in the placings highlights it and the achievements of Madge Simons with Ross underscore it. Well done to everyone concerned!

Sadly, the same cannot be said for the breeding of grouse in 'our' part of Sutherland. Rain every day in June ensured that when the Questor pack of Longhairs chased around after them in August, all they found were mature, chick less birds. Some small reassurance for next year, but of choice, our guns remained silent. We ended up having to rough it with sea trout and salmon instead.

So, here we are. Back home with super fit dogs just bursting to go at the wild pheasants on the fen in October. I swear they check the calendar on the wall every time they come into the kitchen.

In this newsletter you will find an interesting, if slightly technical, article on the PETS Scheme. Please do read it and understand that, when going abroad with animals, there is a need to take far more precautions to protect them than merely complying with the provisions of PETS. Not that anyone should be alarmed, but I am sure that, like us, you treat your dogs dearly and avoiding harm is something worth knowing about.

In March Eileen and I were invited to judge a Dutch German Longhaired Pointer Club spring trial. To say it was an interesting trip would be an understatement. The hospitality was superb.

Their days start with a meeting in a bar/café just before nine in the morning, with pandemonium as enthusiasts descend from all parts of Holland to cram into the space available. The room fills up; people check in; the noise of old friends meeting and greeting each other rises to a high level and then, quickly, order is called; instructions given and everyone rushes outside to jump in their cars and form convoys to travel to the individual trial grounds that are all near by - in all about 60/70 people and four or five tests starting from the same place on the same day. Thank goodness we were provided with a guide and mentor!

The spring trials themselves are very much like the ones we have here - run into wind on open ground. There are classes for both adult dogs and novice dogs. All the game is wild and, perhaps, therefore a little more difficult than we are used to in

the United Kingdom, though the dogs are broadly similar. Some are poor, some indifferent and some good. The best are very, **very** good and easily justify "Excellent" gradings. Some handlers appear to do nothing at all as their dogs flow faultlessly back and forth across the land, and it is only those who understand the importance of 'body language' who can see just how much team effort is going on. With a few handlers it was obvious that this particular penny has not yet dropped as they interfered with their dogs and made them take their noses off the wind. These all paid the price through missing or bumping game caused by poor ground treatment.

At the end of the day it was everyone back to the café for more coffee, beer, chat and critiques on the dogs that had been graded by the judges in each group. This was followed by a generous presentation to us of a signed copy of the now rare 'Jubileumboek' (Jubilee Book), printed in 1979 to mark the 60th anniversary of the Dutch G.L.P. Club.

Eileen has been trying to get hold of a copy of this book for ten years, so it was a very welcome gift indeed and contains invaluable information on the history of the breed - and then yet more coffee, beer, chat and a sincere wish for a safe trip home to all.

The Dutch Longhaired Pointer Club sends their greetings to all of our members and they remain our staunch allies in sport. If you ever have the opportunity to travel over and see any of their dog work I know you will not only enjoy it but you will learn a lot as well. I do, every time I visit.



During the past year we have taken out insurance for the German Longhaired Pointer Club. This does not and cannot cover individual dogs or owners for general mishaps, but does cover any incident that may arise at a Club event. This means that dogs and people (be they handlers, spectators, judges, instructors or guns) are covered by insurance against anything that may happen at an AGM, Pointing Test, Working Test, Training Day or Field Trial organised by and run in the name of the German Longhaired Pointer Club. You should continue to provide your own insurance cover for events outside Club activities, but do first check your ordinary household policy, because most provide what is required.

Having said this, you will no doubt now all rush to take part in the next GLP Training Day, reassured that you will be covered by adequate insurance! Following the format set last year, the day will again be held on Dominic Symington's land near King's Lynn, Norfolk, on Wednesday 3rd November 2004.

The details are:

- Instructors - Ed Booter. (International Field Trial Judge)
David Winser.
- The day will be for German Longhaired Pointers only.
- There will be a minimum of 6 and maximum of 8 runners.
- The runners are NOT in competition.
- Each handler may expect their dog to have at least two runs during which it is expected a total of two birds /other game will be shot.
- There will only be two guns, who will work specifically to the needs of each dog.
- The instructors will involve everyone in the day, keeping them up in the line and discussing all issues, both field trial and general field work, with handlers. Everyone will be invited to contribute to the discussions and to question any matter they wish.
- A trained dog will be available in order to demonstrate any aspects necessary.
- IT IS INTENDED THAT THIS DAY BE FUN, INFORMATIVE AND CONSTRUCTIVE. IT WILL ADDRESS ALL THE ISSUES THAT CANNOT BE RAISED IN A FIELD TRIAL. THERE WILL BE NO ELIMINATIONS. FAULTS WILL BE POINTED OUT BUT OTHERWISE IGNORED.
- Please make your own arrangements for lunch.

- Refreshments will be provided at the end of the day when there will be an opportunity to have a short discussion and re-cap of events.
- In the event of over-subscription a draw will take place.
- Directions will be sent to members who secure a run.
- Un-presented cheques will be destroyed.

Once again, the day will cost £40 per handler as we are required to pay £20 per bird shot. Some of you will recall that last year you had a refund of £20 - not, I hasten to add, through lack of game. In fact there was an abundance of it, but the guns only shot birds as required to assist each dog, so the numbers taken were less than expected. The same will happen this year - it depends what needs to be shot to train your dog. Those wishing to attend, please write to the Secretary by Monday 25th October, enclosing your cheque.

Five of the eight dogs attending last time went on to be placed in a field trial during the following season.

We still have not heard yet from the Kennel Club regarding our application to be put on the Breed Register. Thinking of the future, I ask that all members continue to keep a personal record of the successes they have with their dogs, as I suspect there will be a need to collate them into another document in due course. I offer thanks to everyone for their efforts so far in promoting our Club.

Last, we continue to need good quality photographs of working German Longhaired Pointers for our records so there is a choice for future newsletters and the display stand. If you have any, or can remember to take some, please send them on so the editor has a range of pictures to use to illustrate particular articles.

Good luck to you all during the season ahead,

David Winser.



Congratulations to Madge and Ross

Many people would be happy with a 4th in a puppy test.

A 3rd and they would be very happy indeed.

Four 2nd places and they would be ecstatic, so how would you feel if your puppy was awarded no fewer than Seven 1st places in puppy working tests.

Over the moon, I would say, so a 1st in Novice as well, would really be the cherry on the cake?

Well, they have done it! Questor Eros at Swifthouse, born 14th May 2003, has achieved all of the above.

It just goes to show what excellent trainers can do with a good dog before he is 14th months old. Well done Madge and Cliff Simons. We can't wait to see what you will do in the next twelve months.



(N.B. correct at the time of writing!)

David Winser

Working Test - Gill Mill, Ducklington

I wondered if we were in fact going to get to the working test a Ducklington at all this year. Everything seemed to be going wrong at home with foxes in the barn and both the chickens and sheep making a break for it. We finally got away at 4.30 pm on the Saturday before the test, our ancient caravan in tow. We should have met Mark in the early afternoon at Gill Mill to set everything up and have a nice leisurely evening beside the lake but we still had about two hours journey ahead of us. An hour from home we had a blow out on one of the tyres on the caravan. Of course it had to be the most dangerous road in the country - the A45 just north of Rushden with no hard shoulder and cars and lorries whizzing past at speeds that made our hair curl. There was no way we could have changed the wheel on that road with out some protection so we called 'a very nice man' from the AA. After a trying time on the 'phone to a lady that did not seem to understand English we finally managed to give a location and the 'very nice man' arrived about an hour later. So off we go, very carefully because the other tyre on the caravan was just about the same age and could have gone at any time. Where do you get another spare at 5.30pm on a Saturday evening? By the time we got to Gill Mill and met Mark, it was starting to get dark so we put up the frame of the Gazebo together and decided to do the rest early the next morning. It was now after 10pm. We were starving and had planned a very nice romantic dinner by the lake. But we had not planned to be cooking in the dark and could not see a hand in front of our face. However we enjoyed a very 'blue' fillet steak and a bottle of wine. Mark said he would be back about 7am so we went to bed.

It started off very well with the pup, Eris, on the floor sharing a vet bed with Bourdon. At some time in the night Eris climbed up between us and laid very quietly enjoying a cuddle until Bourdon thought he would join us as well. If you have ever seen Bourdon you will know he is a big lad. He decided he would not get under the duvet but laid on the top and pinned David down so that he could not move an inch, which made him just a tad grumpy. We had very little sleep and when Mark turned up at 6.30am we were still in bed. Never mind, we got everything ready and the bacon sandwiches went down very well, I think we were about ready when everybody started to turn up. So it turned out all right in the end.

We had a very nice day again this year and our grateful thanks go to our hosts Mr John Smith and Mr Peter Steffens, and also to Nigel Bailey for joining us in

the afternoon and presenting the trophies to the prizewinners. Sarah's lunch was the usual gourmet extravaganza that we have come to expect and everybody was very generous when it came to the raffle and the scurry. I hope you all enjoyed the day as much as we did.

1st to 4th place was awarded in three classes again this year Puppy, Novice and Open and out of the possible 12 places in all 5 went to Longhairs; including three out of four in the Open class. As only a total of 12 Longhairs were entered on the day I think that is quite something to be proud of. Well done everybody.

There was so much interest this year that we didn't want to disappoint anybody by restricting the entry, so we doubled up on our judges in an attempt to finish on time. It could have been 25 years ago. Nothing much changed except a few more grey hairs! The banter was just the same. It was great fun. A big thanks to Marilyn Chant, Keith Scattergood and Brian Botterman for stepping in at the last minute to judge with Steve, Peter and Rory. The success of the day is guaranteed with the help of Mark Firmin and his colleagues that turn up every year to help with the dummy throwing. We could not have done it without them and thank them all for giving up their time for us.

The judges from left to right: Rory Major, Brian Botterman, Peter Bakewell, Keith Scattergood, Marilyn Chant, and Steve Chant.

Eileen Winsor



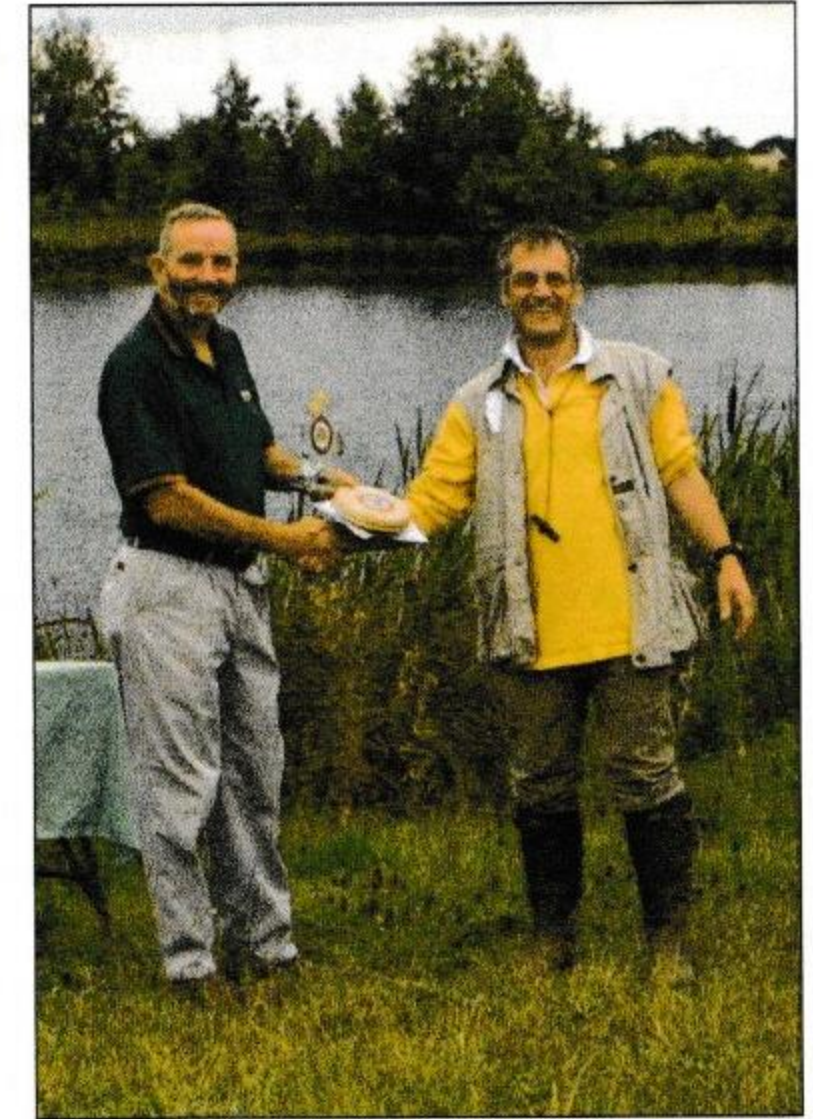
Puppy

- 1st Craigiebyre Monique (H.V.)
Handler: Alison Ruggles
- 2nd Everswell Sugar & Spice (GSP)
Handler: Steve Harvey
- 3rd Wamilanghaar Aquarius (GLP)
Handler: Theo Gould
- 4th Stubblemere Bifur (GSP)
Handler: Janice Hawkes



OPEN

- 1st Wamilanghaar Popacatapetyl (GLP)
Handler: Rob Gould
- 2nd Crackash Gross Biest (LM)
Handler: Annie Jones
- 3rd Konan V.D. Hafkesdell mit Arany (GLP)
Handler: Larry Wilks
- 4th Questor Cranberry (GLP)
Handler: Sarah Bond



Novice

- 1st Kassie Copper Razamatazz (HWV)
Handler: Andy Chatfield
- 2nd Eelyrags Orchid (GSP)
Handler: Garry Lee
- 3rd Eelyrags Poplar (GSP)
Handler: Lee Loveridge
- 4th Arany's Affra (GLP)
Handler: Larry Wilks

The Longhairs



Pets and International Travel: Imported Canine Infectious Diseases

Susan E. Shaw

BVSc (Hons) MSc DipACVIM ipECVIM FACVSc MRCVS

Introduction

The advent of the UK Pets scheme has greatly facilitated the movement of companion animals to and from specified countries in Europe and rabies-free islands without the necessity for quarantine. North America has now been admitted to the scheme despite the fact that it is endemic for rabies and some eastern European countries joining the "expanded" EU may be considered in the near future. At the time of writing, approximately 120,000 dogs have entered the UK under PETS often having travelled from or through countries where exotic canine diseases are common. Control measures to prevent the introduction of infectious diseases are limited to rabies vaccination, and treatment for tapeworms and ticks 24-48 hrs prior to UK entry/re-entry. These recommendations are only aimed at preventing the major zoonotic (diseases which animals share with humans) diseases. Other than rabies, they are not aimed at preventing any of the major diseases affecting dogs and cats. Most importantly, the tick treatment administered 24-48 hrs prior to coming home will not prevent any disease the animal may have already contracted while it was away. In addition, the export of dogs from the UK to other countries are being increasingly affected as those countries demand more complex export testing to prove that dogs resident here are not already infected (e.g. *Babesia gibsoni* testing for dogs going to New Zealand).

As predicted, animals travelling under the PETS scheme are returning to the UK with serious exotic infections. Between April 2002 and July 2003, 44 cases of severe illness due to exotic infections in recently travelled dogs were diagnosed by the University of Bristol's Acarus Unit. Several of these cases

were fatal. In March 2003, DEFRA started a voluntary recording scheme called DACTARI (Dog and Cat travel risk information) in which veterinary practitioners are asked to record cases of illness in travelled dogs and cats and it is vital that all suspected or confirmed cases are recorded.

DISEASES OF CONCERN

Rabies (Lyssavirus infection)

The risk of rabies is minimal if the vaccination regimes recommended by manufacturers are used. Although many countries in Western Europe have successfully eliminated classical rabies from their dog and fox population, countries in Central and Eastern Europe, Asia, Africa, Central and South America still have major problems and are not included as PETS destinations. However, North America now provides the exception. In 2001, 89 domestic dogs were diagnosed with rabies in the USA and 6,939 cases were reported in wildlife (raccoons, skunks, foxes and bats). The majority was recorded in the eastern states of the USA. In 2002-2003, 5 cases of rabies vaccine breakdown were diagnosed in dogs in the US. After being transmitted through the bite of an infected mammal, the rabies virus travels by nerves to the brain causing an encephalomyelitis. Signs of infection are all related to involvement of the nervous system but in the early stages they manifest as behavior changes. Normally aggressive dogs may become timid and frightened of their surroundings and the manic behavior often seen on video presentations is actually rare. As the disease progresses, signs of muscle weakness or paralysis of the back legs may occur in combination with paralysis of facial or throat muscles. Convulsions and death follow. The recent reports of bat rabies in the UK are also of concern. Although the European bat lyssavirus is closely related to classical rabies virus, it is well adapted to bats and even though it causes human rabies, there are no reports of infection in dogs. Even so, extreme care should be taken if dogs come into contact with ill bats. The DEFRA website (www.defra.gov.uk/animalh/diseases) contains useful information on this subject.

Diseases transmitted by ticks

Babesiosis (piroplasmosis): Babesiosis is caused by a protozoan parasite that is transmitted by several species of ticks and attacks red blood cells. Several *Babesia* species affect domestic dogs in Africa, Europe and Asia. Young to middle aged dogs may be more predisposed, although any dog, which does not have immunity, is predisposed. Although ticks are the major means of transmission, there have been reports of transmission by blood transfusions and biting. Biting is believed to have resulted in a high prevalence of a virulent babesia species in Staffordshire Bull Terriers, Pit Bull Terriers and their crosses in the US. Dogs with babesiosis show signs related to haemolytic anaemia and these include high fever, lethargy, weakness, red urine and collapse in severe cases. Later severe anaemia, jaundice and organ failure can occur. It appears that dogs with some immunity may remain carriers for years and stress or other diseases may induce sudden onset of clinical signs of weakness and collapse. Diagnosis is made by demonstration of protozoal organisms in blood, lymph node, bone marrow or splenic aspirates in combination with compatible clinical signs. No serological tests are routinely available for babesiosis but molecular (PCR) testing is now well developed and available to all practitioners. Treatment depends on the species of babesia. Most commonly, imidocarb dipropionate is used although the small babesia species such as *B. gibsoni* require complex therapy such as the anti-malarial atovaquone in combination with azithromycin. No product is licensed for use in dogs in the UK. Treatment for shock and anaemia may be required in severe cases. There is no vaccination for dogs but the disease is prevented by aggressive tick control. The common babesia species affecting dogs do not cause disease in humans.

Ehrlichiosis: Ehrlichiosis is caused by tick-transmitted bacteria that invade white blood cells and in some cases, platelets. The most common and important species affecting dogs is *Ehrlichia canis*. It is transmitted by the kennel tick, which is well adapted to kennels, houses and cars. It has been reported from the USA, Europe and Africa. German Shepherds are predisposed to serious

disease and may develop a fatal form of infection. Transmission by blood transfusion also occurs. Clinical signs include intermittent fever, lymph gland and spleen enlargement, bleeding, weight loss, severe eye disease, other signs of immune-mediated disease and bone marrow dysfunction. Low platelet counts with poor blood clotting caused the bleeding and extremely high protein levels may result in hyperviscosity syndrome. Diagnosis is made by demonstration of organisms in white blood cells, or by specific molecular testing (PCR) on a peripheral blood sample. Serological testing is available but cross-reactions may occur with other ehrlichial organisms and two samples one month apart are required to confirm active infection. Doxycycline or tetracycline is the treatment of choice for ehrlichiosis and response in the early stages of infection is reported to be excellent. Antibiotic therapy should be administered for a minimum period of 28 days. There is no vaccination but the disease may be prevented by aggressive tick control. *Ehrlichia canis* does not cause disease in humans but some of the less common ehrlichial species found in the US are zoonotic.

Aggressive tick control

Use fipronil or pyrethroids and apply several days before leaving and then monthly thereafter. Fipronil spray can also be used more frequently on the worst tick attachment sites (head, ears, neck, brisket, front legs and paws). Examine your dog EVERY day and remove ticks with a proper removing tool. Remember that larval and nymphal ticks are extremely small. Comply with the PETS regulation to remove ticks 24-48hrs before return but remember that this will not stop your dog getting infected with the diseases they have already picked up. Unfortunately there are many anecdotal reports of live ticks still being found on dogs after travelling.

Diseases transmitted by sandflies

Leishmaniasis: Leishmaniasis caused by the protozoan parasite *Leishmania infantum* is transmitted by sandflies. Dogs are the major reservoir for this infection. It is extremely common in countries surrounding the Mediterranean and in South America. In Spain and the Balearic islands, the infection

prevalence in dogs often approached 90%. Most recently it has spread across the US and Canada particularly in the Foxhound breed despite the fact that there are no competent sandfly vectors in these areas. Dog to dog transmission and vertical transmission has been suggested and spread through contaminated blood products has occurred in the US. Another explanation is that a sandfly species common in the area of Foxhound kennels in New York State has suddenly become adapted to transmitting the disease. This disease is chronic and may have an incubation period of months to years. Skin lesions particularly involving the head in combination with lymph gland and spleen enlargement, weight loss, kidney disease, polyarthritis, eye disease and other signs of immune-mediated disease are seen. High protein levels may result in hyperviscosity syndrome. Diagnosis is most commonly made by the demonstration of protozoal organisms in tissue biopsy specimens using both light and electron microscopic examination. Serological tests are available. PCR, particularly of bone marrow offers a sensitive and specific diagnostic tool for this disease. There are no therapeutic agents licensed in the UK for canine leishmaniasis. Treatment usually involves combination of allopurinol and glucamine antimonate. The latter drug has to be imported from other European countries. Treatment is rarely if ever, curative and dogs remain infected for life. There is no vaccination and infection is prevented by decreasing exposure to sandflies. The use of pyrethroids such as deltamethrin and keeping dogs indoors between 7pm and 7am is recommended. This infection does cause disease in humans particularly in immunosuppressed adults and children. It is a major concern that treatment of infected dogs may result in drug resistance.

Diseases transmitted by mosquitoes

Heartworm disease: Heartworm disease (dirofilariasis) is caused by the nematode parasite, *Dirofilaria immitis* that is transmitted by mosquitoes of many species. Dirofilariasis is common in southern Europe, USA, Canada, Australia and South-Eastern and eastern Asia including Japan. In Europe, it is prevalent in Portugal, Spain, southern France, Italy, Greece and other peri Mediterranean

countries. The dog is the primary host for *Dirofilaria immitis*. The microscopic larval parasites are transmitted by mosquitoes into the skin. From there they migrate slowly through the body to one of the major blood vessels of the heart, the pulmonary artery. Here they may reach adult size (up to 30 cms). The onset of disease is usually slow (months to years) unless the dogs have been exposed to a large number of infected mosquitoes at the same time. Clinical signs include exercise intolerance, coughing, weight loss, and occasionally death. Diagnosis is by demonstrating worms in the pulmonary artery using ultrasound, characteristic heart and lung changes on radiography and use of serological testing. Treatment of heartworm infection in dogs is complex and potentially dangerous. As they are killed, the worms are washed into the blood vessels of the lungs where they cause arterial blockage and lung damage. No drugs are licensed in the UK for treatment of heartworm and they must be imported especially from other European countries. Corticosteroids and supportive oxygen in severe cases with cage rest are advocated. Heartworm can be easily prevented using selamectin or milbemycin, which are available and licensed in the UK. Heartworm can affect humans but it is extremely rare and usually only occurs in areas of extremely high prevalence. *

This interesting talk was given by Susan E. Shaw at the Breeders Symposium organised by the Kennel Club and the Pet Food Manufacturers' Association on Sunday 8th February 2004 at the University of Hertfordshire, Hatfield.

With the freedom now presented by the Pet Travel Scheme it should give owners food for thought if they are thinking about taking their pets abroad, as the precautionary medication in relation to ticks only has to be administered when the animal returns into this country – you may now feel it is essential that it is protected before being exposed to the dangers described in this article.

Editor

The AGM and Fun Day

The AGM was a really nice day this year. We had beautiful early summer weather and were able to hold it in the garden under the Gazebo. We all enjoyed a super 'Sarah lunch' and then a bit of fun with the dogs in the afternoon. What's more we still made a profit of £38 for the Club. Many thanks to Richard and Sheila Kuban for setting and judging the tests. David and Eileen donated the rosettes.

Results as follows:

Puppy

1 st Ross	Handled by Madge Simons
2 nd Anya	Handled by Allan Drysdale
3 rd Hatti	Handled by Allan Drysdale

Novice

1 st Anya	Handled by Allan Drysdale
2 nd Whizz	Handled by Madge Simons
3 rd Ross	Handled by Madge Simons

Open

1 st Tarn	Handled by Sara Bond
2 nd Gaoithe	Handled by Eileen Winser

It was nice to see Tarn 'wipe' his dad's eye.



Minutes of the Annual General Meeting of the German Longhaired Pointer Club held at Pointers, Wistow, Huntingdon, Cambs. on Sunday 30th May 2004, at 11am.

1) **Present:** Rob Gould, Theo Gould, Sheila Kuban, Richard Kuban, Stephen Winser, Emma Kelly, Catherine Drysdale, Allan Drysdale, Rory Major, Sarah Bond, Mick Phillips, Elizabeth Phillips, Brenda Moss, Larry Wilks, Norman Papworth, Daphne Papworth, Luisa French. Chris Hartnoll. Madge Simons. Eileen Winser, David Winser.

2) **Apologies for absence:** Stephen French, James & Wendy Walker, Rozanne Kennedy, Sue & Dennis Berry. Cliff Simons, Jose Baddeley, David Thrower.

David Winser welcomed everybody to the AGM.

3) Minutes of the AGM on 25th May 2003

The minutes were read to the meeting and Sheila Kuban pointed out that the heading on the agenda "The Kennel Club Working Show Dog Certificate" was in fact incorrect and it should be "The Kennel Club ^{WORKING} Gun Dog Certificate". With this alteration made the minutes were signed as a true record.

4) Matters arising

Mick Phillips asked if there was any progress regarding the Club lapel badges. The secretary said that the badges had been received the day after some of the Newsletters were posted. Badges were handed out to those people who did not receive them in their Newsletter. It was noted that the fixing on the back of the badges was not always secure and members should let the Secretary know if they had received a faulty badge. Apart from this the design was thought to be very acceptable.

5) To Elect a Chairman and Officers

David Winser stood down and Sheila Kuban took the Chair to elect a Chairman for the forthcoming year. There being no other proposal David Winser was duly elected Chairman. The other members of the committee and the officers of the Club were willing to stand for another year and were elected en bloc. Proposed by Rory Major and seconded by Theo. Gould.

6) Treasurers Report

The secretary/treasurer reported that the bank balance stood at £1,574.55. This was after we had taken out insurance cover for the year and the new Club lapel badges were paid for. Mick Phillips proposed that the accounts should be accepted and was seconded by Rob Gould.

7) Working Test

The Chairman confirmed we had been invited back to Ducklington again this year and we were hoping for another very successful event. Schedules went out to all those people who entered in 2002 and 2003 plus all members and associate members. Steve Chant has agreed to judge the Puppy test, Peter Bakewell the Novice and Rory Major the Open.

8) Training Day

Dominic Symington had offered his land at Kings Lynn for another training day. The cost will be £40 per person. Brian Botterman has agreed to be the tutor again this year. The date has yet to be arranged but it will be towards the end of October.

9) To consider a resolution proposed by Mr M. Phillips and seconded by Ms. B. Moss as a rule change in relation to the number of committee members.

Mick Phillips said that the Committee had not handled his resolution correctly but could not explain how he expected it to be dealt with. Rory Major suggested that this matter is left with the Committee to deal with and the Chairman suggested that a yearly review regarding the number of Committee members in relation the number of members is considered and increased as and when necessary. Mr Phillips said he thought that this suggestion was acceptable and it should go on the Agenda for next years AGM.

10) The Kennel Club

The Chairman reported that a very lengthy letter had been sent to the Kennel Club indicating the growth and strength of the German Longhaired Pointer Club over the last eight years. A great deal of research has been put into this letter and it gave statistics of the successful breeding programmes that were being made by the members of the Club. The success that the dogs had had in the show ring, working tests, spring pointing tests and field trials including the

fact that we now have a Field Trial Champion and an open Field Trial winner. The purpose of bringing all this to the attention of the Kennel Club was to ask to be transferred from the Imported Breed Register to the Breed Register. The Chairman read out a reply from the Manager of Registered Societies STA Department, Mrs Caroline Hallett. Mrs Hallett informed us that our application would be submitted to the Breed Standards and Stud Book Sub-Committee for consideration. This Sub-Committee only meets quarterly and a delay of several months should be expected.

11) Any other Business

a) The secretary said that the Committee had purchased a software programme to keep a database of all the dogs in the country. This database is up to date and the pedigrees that were not sent to her have been purchased from the Kennel Club. There is also a database to record membership, with details of the dogs that each member owns, puppies registered and the details of the dam and sire.

b) As proposed by Mr Phillips at last years AGM the Committee discussed the description of the coat in the Interim Breed Standard for the German Longhaired Pointer at their last meeting. The Committee agreed that the fact that the colour black is not permitted should be in the Breed Standard. The decision was that the time to make any alterations would be when we are accepted onto the Breed register and the word 'interim' is removed from our Breed Standard.

c) Mr Phillips brought a copy of a notice from the Kennel Club regarding giving water from a container to dogs during a field trial to the attention of members. Mrs Kuban advised that in some breeds water was forcibly given to dogs as a punishment for misbehaving and this is what the Kennel Club were discouraging. Following a short discussion it was agreed that such matters were for the attention of Stewards and Judges, not for Clubs to make rules for their members.

d) The Chairman congratulated Rob Gould for his 1st place in an Open stake and Sarah Bond for her 1st place in a Novice stake. Everybody added their congratulations and best wishes to both for the next Field Trial Season.

There being no other business the meeting closed at 12.30pm.

Dates for your diaries

Field Trials	Stake	Club and Location	Judges
2nd October	Novice	Weimaraner Association Coats Marsh, Goole	Fred Alcock & John Naylor
8 th October	Novice	Italian Spionone Club Coats Marsh Grange, Carlton	Fred Alcock & John Naylor
9 th October	Novice	G.S.P.A. Westerham, Kent	Fred Alcock & Steve Robson
9 th October	Novice	G.S.P.C. Launton, Oxon.	Mick Cante & Irmgard Alcock
9 th October	All Aged	H.P.R. Club of Scotland	To be advised
16 th October	All Aged	G.S.P.C. Dalhouse Estate, Edzell.	Godfrey Card & John Naylor
20 th October	Open	Dukeries Gundog Club Belvoir Castle, Nr Grantham.	Godfrey Card & Mick Canham
23 rd October	Novice	G.S.P.A. Aqualate, Shropshire	John Lambert & Geoff Hargreaves
23 rd October	Novice	The Kennel Club Blenheim. Oxon	Graham Nixon & Peter O'Driscoll
29 th October	All Aged	G.S.P.A. Beaufront Castle, Northumbria	Godfrey Card & Peter O'Driscoll
30 th October	Novice	G.S.P.A. Chipchase Castle, Hexham.	Margaret Davison & Humphrey Greenwood
5 th November	Novice	G.S.P.C. Ford, Northumberland	Tony Russell & Simon Young
5 th November	All Aged	Hungarian Vizsla Soc. Stoke Rochford.	Nigel Cox & Eileen Winser
6 th November	All Aged	G.S.P.C. Lauder, Berwickshire.	Nigel Cox & Mick Canham
6 th November	Novice	Large Munsterlander Club Westerham, Kent	To be advised
13 th November	Novice	Norfolk & Suffolk H.P.R. Club. Westerham, Kent	To be advised
18 th November	Novice	G.S.P.C. Rise. East Yorkshire.	Brian Genney & John Burns

Field Trials	Stake	Club and Location	Judges
19 th November	Open	G.S.P.C. Boythorpe, East Yorks.	Trevor Horsefield & Craig Simpson
20 th November	Novice	G.S.P.A. Cornsay, Co.Durham	Maureen Nixon & Ray Butler
27 th November	All Aged	G.S.P.A. Canwell Park. Staffs.	Keith Scattergood & Jennifer Hurley
4 th December	Novice	G.S.P.A. Hassop Hall. Derbys.	Graham Nixon & Jean Mauer
7 th December	All Aged	G.S.P.A. Sarratt. Herts	Chris Church & John Naylor
9 th December	Open	The Kennel Club Hownam, Roxburghshire	Mick Cante & Mick Canham
1 st January	Open	G.S.P.A. Little Dalby, Leics.	Tony Russell & Val O'Keefe
6 th January	All Aged	G.S.P.A. Goldsticks. Essex	Jim Field & Chris Snelling
26 th January	Novice	Weimaraner Ass. Benniworth. Lincs.	To be advised
17 th January	Novice	G.S.P.C. Brocket, Hertfordshire	Murray Wakeham & Jennifer Hurley
27 th January	Open	G.S.P.C. Stow Bardolph, Norfolk.	Sheila Kuban & Steve Chant

Training Days

6th/13th/20th/27th October Woodhall Park, Hertfordshire, G.S.P.C. members
Details from David Pilkington Tel: 01708 371860

3rd November Training Day at Kings Lynn (G.L.P's only)

Discover Dogs

13th & 14th November Discover Dogs - London

10th to 13th March Discover Dogs - Crufts

Field Trial Secretaries of Clubs arranging trials

German Shorthaired Pointer Club

David Winser,

Pointers,

Wistow, Huntingdon,

Cambs. PE28 2QH. Email: david@winser.go-plus.net Tel: 01487 822366

German Shorthaired Pointer Association.

Maureen Nixon

The Old Rectory,

Rectory Lane, Nailstone,

Nuneaton. CV13 OQQ. Email: GSPAFTSEC@aol.com Tel: 01530 260658

The Italian Spinone Club of Great Britain

Alix Johnson,

30 Falaise Road

Middle Wallop, Stockbridge,

Hants. SO20 8GA. Email: 3girlsandtreve@lineone.net Tel 01264 781913

Dukeries Gundog Club

Beryl Middleton

23 Long Meadows,

Everton. Doncaster

DN10 5BL. Tel: 01777 817351

Bristol & West Working Gundog Society

Christine Carpenter

Hilltop Cottage, East Woodlands,

Frome, Somerset. BA11 5LW. Tel: 01373 462963

Brittany Club of Great Britain

Ray Fairbrother,

10 Croftway, Markfield,

Leicestershire, LE67 9UG. Email: goodthyme@hotmail.com Tel: 01530 244428

Hungarian Vizsla Club

Penny Simpson,

28 Asthill Grove,

Coventry, West Midlands.

CV3 6HP. Email: edward@fiscardo.globalnet.co.uk Tel: 02476 502450

Hungarian Vizsla Society

Sue Harris,

North Moreton Lodge,

North Morton, Nr Didcot,

Oxon. OX11 9AT. Email: harris@nmlodge.freemove.co.uk Tel: 01235 812046

Large Munsterlander Club

Helen Evans,

River Cottage, Dernford,

Stapleford, Cambs. CB2 5DY. Email: helen.j.evans@tesco.net Tel 01223 845255

Weimaraner Association

Penny Pickstone,

Diamond House, Riplingham,

Brough, Yorks. HU15 1QT. Tel: 01482 657337

Weimaraner Club of Great Britain

Costas Wilkinson,

Lukers Farm, Grittenham,

Chippenham,

Wilts. WR8 OAD. Email: costas.wilkinson@avis-europe.com Tel: 01666 510275

Hampshire Gundog Society

Mike Russell De Clifford,

Minterne, Lower Street,

Donhead St. Andrews,

Shaftesbury. SP7 9EE Email: oldendorfrdc@aol.com Tel: 01747 828554

Lothian & Borders Gundog Association

Annette Usher,

Buteland House, Balerno,

Mid Lothian, EH14 7JJ Email: annette@buteland.co.uk Tel: 01314 494245

H.P.R. Club of Scotland

Marian Waddell

2 Auchengree

Glengarnock

Ayrshire. KA14 3BU Tel: 01505 685539

The Kennel Club - Ann Greeves. Tel: 0207518 1059

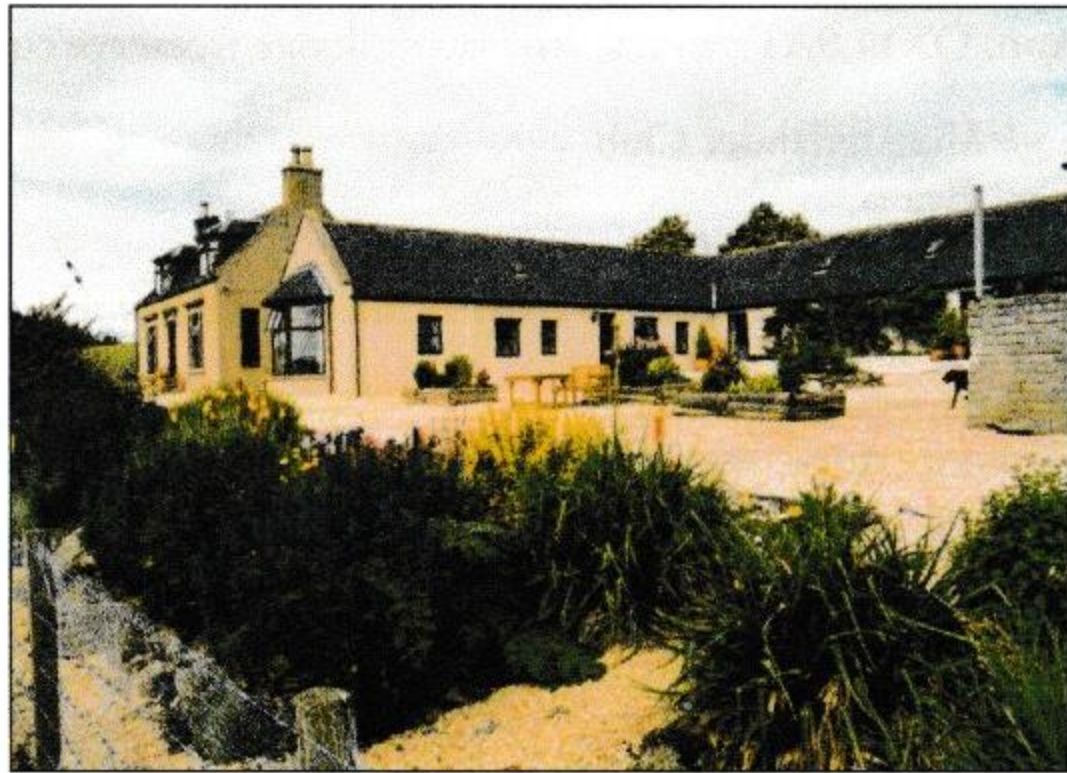
1 - 5 Clarges Street

London W1J 8AB

CULLIESHANGAN HOLIDAYS

Bring your dogs to Cullieshangan the new home of "MAPLEHAZE FINEARTS" in the heart of beautiful Speyside Malt Whisky country.

A traditional stone and slate farmhouse and steading set in five acres overlooking the hills of lower Speyside, Cullieshangan offers self catering accommodation or, to those booking shooting, B&B with the option of evening meal when ordered in advance. Guest accommodation in the old farmhouse consists of 2 bedrooms sleeping five/six, one double room (with a box room containing a "Z" bed off) and one family



room with three single beds, bathroom, lounge with multi-fuel stove, kitchen and downstairs cloakroom. All rooms are spacious and comfortably furnished. Outside you can relax with a BBQ in the south facing courtyard or lounge in the stone conservatory.

Purpose built kennels within the steading are at hand if required and a dog sitting service is available if you want a day out without the dogs.

Take your dogs on the many forest walks or on the Speyside Way all within minutes of Cullieshangan. The lovely sandy beaches, caves and coves of the Moray Coast are only fifteen miles away and more serious hill walkers have plenty of options with the Cairngorms and Aviemore one hours drive along the stunning Spey valley. The cities of Inverness and Aberdeen are a little more than an hour away.

Go on the Malt Whisky or Castle Trails or try the many quality golf courses in the area. Bird watchers can hope to glimpse ospreys along the Spey or capercallie in the woods behind the house.

Quality accommodation in a relaxed atmosphere at affordable prices where your dogs will be welcome.

SHOOTING AND GUNDOG TRAINING BREAKS

All types of shooting can be arranged from small grouse days over your own dogs, mixed rough shooting to full driven days. Roe stalking and fishing is also available. It is possible to arrange most types of shooting whatever your requirements or budget, given sufficient notice.

Gundog training is also available from beginner to advanced with the opportunity to gain experience on most types of game and to have more advanced dogs shot over. For all enquiries, leaflets, photos and price lists - write phone or e-mail

ANNE & STEVE JOHNSON

Cullieshangan, Mulben, Keith, Banffshire. AB55 6YT. Tel: 01542860380

anne@maplehaze-finearts.co.uk

www.maplehaze-finearts.co.uk

Club Items

Car Stickers	£1.50
Grooming Video	£10.00
Club Lapel Badge	£2.50
Notelet Cards	£2.00
Embroidered Blazer Badges	£6.50
Greetings Cards	£0.95

Available from the Dutch Club (on request)

Dummy Bags with G.L.P. motif	£8.50
Umbrella with G.L.P. motif	£8.50
Pewter GLP Brooch	£3.00
Pewter GLP Key Ring	£4.00

0000000

Your next Newsletter will be due in February 2005

To ensure you receive your Newsletter on time please
send all material to be included to:

Sarah Bond, The Willows, Mill Road, Buxhall,
Stowmarket, Suffolk. IP14 3DW

Before Monday 10th January 2005

Any articles or letters received after this date
will be included in the Autumn 2005 issue

The editor reserves the right not to publish any articles or letters submitted