



Are proud to sponsor the
German Longhaired Pointer Club
events and wish all
competitors and exhibitors
success in the coming year



The German Longhaired Pointer Club

NEWSLETTER



Spring / Summer 2011

Committee 2010/2011

Chairman/ Field Trial Secretary	David Winser, Pointers, Wistow, Huntingdon, Cambs. PE28 2QH. Tel: 01487 822366 email: david@winser.go-plus.net
Vice Chairman	Sheila Kuban, The Hawks Nest, Prey Heath, Mayford, Woking, Surrey. GU22 OSL. Tel: 01483 763538 email: hawksnest@freeuk.com
Secretary	Eileen Winser, Pointers, Wistow, Huntingdon, Cambs. PE28 2QH. Tel: 01487 822366 email: eileen@winser.go-plus.net
Treasurer/ Membership Secretary	Chris Hartnoll, Jack's House, Ruddle Way, Langham, Rutland, LE15 7NZ. Tel: 07801 280917 email: chris@chfi.co.uk
Show Secretary	Maureen Court, The Meadows, Aire Street, Knottingley, West Yorkshire. WF11 9AT. Tel: 01977 673748 email: ballyheige.gsp@virgin.net
	Sarah Bond, The Willows, Mill Road, Buxhall, Stowmarket, Suffolk. IP14 3DW Tel: 01449 736544 email: sarahbond@yahoo.co.uk
Committee Member	Rob Gould, Wamil Hythe, The Street, Worlington, Bury St. Edmunds. Suffolk. IP28 8RX. Tel: 01638 717871 email: rob@glp.demon.co.uk
Hon Vets	Rob Gould, BVet.Med, MRCVS Theo Gould, MA, Vet.MB, MRCVS

Chairman's Report It is a small world.....

As I write in the fourth week of May it seems a long time ago that the field trial season ended (accompanied by a small sigh of relief from me), for the dog work only to be resurrected with a bang in March and our two pointing tests at either end of the country in the same week. I had promised three, but our third ground was sort of hijacked by the HPRFTA who wanted it to train potential judges in the art of judging pointing tests, which to me seems quite an important thing to lay on. Although at virtually no cost and thrown open to everyone, there were no takers at all, by which time it was too late to organise a pointing test for us. We will have another go for the GLPC next spring.

Nevertheless the spring pointing tests were good. We started on the excellent ground at Balsham. I had thought that we might have been a little too early for the rape, and the wheat was almost non-existent, however in the event we were blessed with superb cover and a good supply of partridges.

The next weekend saw us in Morayshire, driving through snow covered mountains and running the dogs up to and above the snow line on grouse, which were again plentiful. This is another excellent ground for running dogs.

These were two very good tests, with a total of eight gradings for the thirty three dogs that were entered. The results appear elsewhere in this newsletter.

You may not have heard, but there is some concern about coat colour on the continent. The coat colour of yellow in a German Longhaired Pointer is undesirable as the only colours accepted are brown or brown and white, with many variations of the two in between. The condition is known as E-Locus and concerns coat colour only. It is not connected with any deformity, inherited or otherwise. Theo Gould has kindly presented a short article about it for your information, and my best advice is to have your dogs tested before you use them for breeding. We do, and consider it well worth the trouble. At present the only testing laboratory is in Holland, but we are researching possibilities in this country and will let you know the result.

Eileen and I went to southern Holland in April to watch a number of pointing tests. Several breed clubs held their world championships and other tests (including tracking proofs) in Zeeland this year, together with the Europa Cup and, for the first time, the F.C.I. held a Centenary Pointing Test to mark that auspicious occasion. In fact there were tests on nearly every day for a month or more, so there was plenty to watch for those with the time and inclination.

These events are highly regarded and, in fact, spring trials qualify dogs to the same level that both Open Stakes in the U.K. and autumn trials in Europe do. They are taken very seriously and breeding programmes are greatly influenced by the results of spring and autumn trials, both of which have a strong element of breed conformation in the judging. It is no good just being an avid hunter – there is a requirement to be correct and beautiful as well!

All were, as usual, extremely well attended with never fewer than six groups on a day. The logistics for such numbers are an art in itself. The cheapest entry was €125 per dog – a far cry from the £10 or so we pay over here, so we should count ourselves very lucky indeed.

For the world championship events and the Europa Cup, countries are mainly represented by teams which have to first compete and qualify in their country of origin under a national Panel Judge, so they have had to fight to be there in the first place and there are some pretty impressive entries on each day. The dogs we saw were, by and large, breath-taking. Some were naughty and bumped birds and/or chased hares, but most ran like the wind and ate up ground like it was going out of fashion. There is no released game, only wild birds which are far from easy, so when a dog pointed it stunned the considerable audience into silence. It was a shame for those which had just pheasants, as only grey partridges counted. There were no junior dogs in the stakes that we watched.

I suspect that it might have been a little too much for some people in this country, who are more accustomed to large, quickly and easily findable quantities of reared birds, but as one spectator (a Hungarian judge who had just come along to watch) quite rightly commented *“It does not matter if a dog is a kilometre away if it comes back as soon as you call it.”* And for a dog to be that far away takes a lot of training, a lot of trust and a lot of control from the handler, whatever anyone says.

The dogs came from countries which included one dog from England and teams from Greece, Czechoslovakia, Poland, Russia, Ukraine, Spain, Italy, Croatia, France, Holland, Germany, Hungary, Denmark, Norway and Sweden, so the representation was broad and the competition fierce, only to be matched by the camaraderie of the owners, handlers, judges and spectators. It is surprising how little language gets in the way when you are talking about a shared passion.

To be perfectly honest, Eileen and I went over primarily to watch the German Shorthaired Pointer World Championship, which was run over two days. We saw some very good dogs. After an intervening Sunday visiting friends we returned to Zeeland to watch the Europa Cup and, finally, the F.C.I. Centenary event.

The FCI trial was for individuals rather than teams, and we were to see the best that each country had to offer. A total of 94 dogs were entered on this day and they were from almost every hunt, point, and retrieve breed. We did not know until we saw the programme on arrival in the morning, but among the 94 dogs were three Longhairs – one of which we have already used ourselves as a stud dog and two from the famous Dutch Kreppelse Heide Kennel – although one of these is now living in Spain. I am delighted to say that all three were graded as either Very Good or Excellent (1 EXC CAC), and one, after a run off (barrage) with two others – a French German Shorthair and a Croatian German Shorthair, was awarded a 1 EXC CAC-CACIT, being the top dog on the day and as a result (and for the next 100 years according to the President) was the FCI World Champion. Some result! Our congratulations go to Theo Carbijn for doing so well (again). Interestingly, the main purpose of the barrage is to select the dog, from among those awarded a 1 EXC – CAC during the day, which is closest to their breed standard.

There was much celebration and we returned home very happy indeed.

Why a small world?

FCI World Champion Iron V.D. Kreppelse Heide is the son of Alice Loorderse of Questor, a young bitch that went back to Holland some years ago.

It is a small world.....isn't it?

Best wishes, David



Iron V D Kreppelse Heide

The inheritance of undesirable coat colour in G.L.P.s

German Longhaired Pointers are classically brown, brown and white or roan in colour. Coat length and colour are determined by a complex combination of genetic features that are expressed on a dog's DNA. When two dogs are mated, various features from the DNA of each parent come together to form the new DNA for the offspring.

There has been much publicity recently about a genetic feature called the E-Locus that can result in the colour yellow or cream. This gene is present in many breeds of dog including the Border Collie, English Setter, German Shepherd, Brittany, Cocker Spaniel, German Shorthaired Pointer, German Wirehaired Pointer, German Longhaired Pointer, Irish Setter and Pointer.

The E-Locus has to be present in its dominant form EE or Ee for the approved coat colour i.e. brown/white/roan combination, to be expressed; if the recessive form ee is present the coat will be cream or yellow.

Each parent donates only one of its gene pair to each offspring

PARENTS → Gene pairs	OFFSPRING possible gene pairs	COLOUR [Brown =approved brown/white/roan combination]
EE x EE →	EE or EE or EE or EE	i.e. 100 % Brown offspring
EE x Ee →	EE or EE or Ee or Ee	i.e. 100 % Brown offspring
Ee x Ee →	EE or Ee or Ee or ee	i.e. 75% Brown 25% Cream offspring
ee x ee →	ee or ee or ee or ee	i.e. 100% Cream offspring

GLP breeders in Holland are recommended to have their breeding stock DNA tested prior to mating so that two carriers of the recessive gene e are not mated and no cream/yellow offspring are produced.

Making the decision to breed from two dogs is a very important step and many factors need to be taken into consideration including temperament, working ability and conformation [e.g. hips, elbows and eyes] and various other health issues. Although the E-Locus has no implications on your dog's health, it would be beneficial to our breed to start DNA testing our breeding dogs especially if we want to liaise and work with our continental colleagues in our breeding programme.

The DNA test is available at a laboratory in Holland. Mouth swabs are now available from Eileen Winser. The cost of the test is 59 Euros, approx £51.

Theo Gould MA,VetMB.MRCVS

Spring Pointing Test - Balsham

Spring Pointing Test Report

Venue: Balsham, Cambridgeshire

By Kind Permission of: Robin Vestey

Judges: Jean Robertson and Brian Botterman

Date: 26th March 2011

Weather: Cold and dry with a steady breeze all day.

Scent: Poor

It was a great pleasure to see dogs run on this fantastic ground in acres and acres of oilseed rape in good partridge country. It became apparent as the day went on that scent was not good many dogs acknowledging that game was present but then putting their noses down and bumping their finds. The dogs that were graded were the ones that dealt with the conditions very well indeed and they are as follows:

Junior

Graded Very Good

Seehof Englacey at Swifthouse. GSP. (B) - Mrs M Simons

In her first run this strong stylish bitch showed how it should be done hunting a very wide beat, head high and turning into wind on every cast unfortunately this run was blank. On her second run she again attacked her ground in the same manner until finally some 30 metres from the edge of a wood she came on a staunch point head held high, encouraged to flush she produced a cock pheasant and watched it away.

Adult

Graded Good

Questor Eris. GLP. (B.) - Mr D Winser

This bitch started her run nicely hunting if a bit left handed with high head carriage and turning into wind when she was distracted by a hare which disturbed her pattern somewhat. With a few minutes left of her run with went into the next field where she still persisted on the left side of her beat, she indicated scent but her handler whistled her off, she continued and promptly ran back to the area she had indicated and then had a nice point on 2 pairs of partridges that lifted ahead.

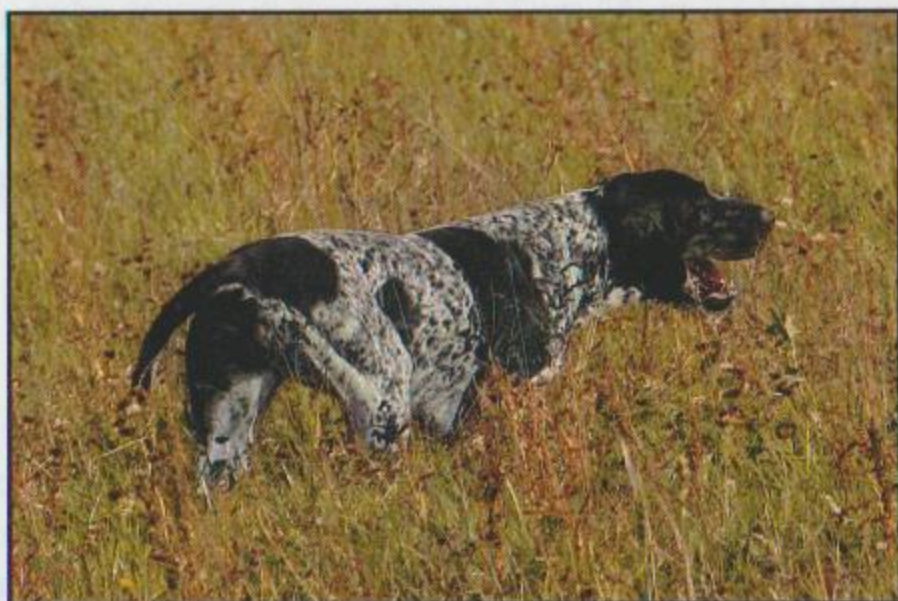
Graded Very Good

Questor A'Choire Ghlais GSP. (B) Mrs E Winser

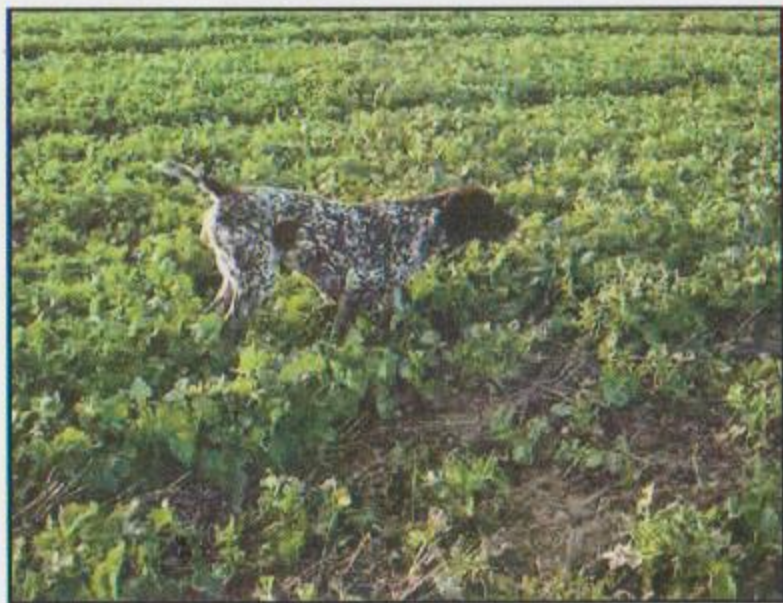
In her first run this fast wide ranging bitch took up the ground with ease. She consistently turned into wind and was very stylish. Her handler just let her get on with the job and it was a pleasure to watch.

Unfortunately this run was blank. On her second run she hunted in the same manner quickly indicating game to the left of her beat, she came on to a lovely staunch point head held high and was rewarded with a pair of partridges.

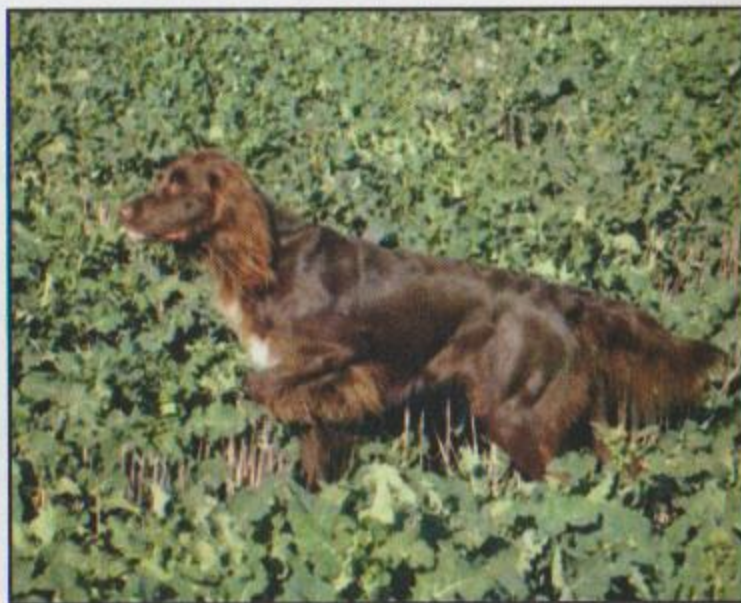
Our thanks to the GLPC for the invitation to judge and for providing our lunch and a seasonal tea of hot cross buns, it was a most enjoyable day.



Seehof Englacey at Swifthouse



Questor A'Choire Ghlais



Questor Eris

Grouse Pointing Test Dunphail, Morayshire 02/04/11

Group 1.

Judges: Mr D Winser, Ms J Hay and Mr C Gray

General Conditions and Observations.

The morning started wet and cold with what little wind was blowing varying from West to N.West, scenting conditions whilst not perfect were reasonable and improved throughout the day along with the weather. Conditions by mid-day were fairly good for the job in hand with a light but steady breeze, though still varying in direction. There was a fair attempt throughout the day to keep all dogs running into a head/cheek wind. Game was scarce but this favoured the bolder dogs that were capable of getting out there and looking for it. Five dogs were graded in Group 1, three adults and two juniors.

Group 2

Judges: Ann Johnson and Eileen Winser

Unfortunately Group 2 did not have any graded dogs. The game was very few and far between and little was seen until we moved on to higher ground. Grouse were then found but the dogs failed to make more of their runs.

Juniors. (Group 1)

Graded Good

Mooruner Myrtle, GWP. (B) D.O.B. 26/04/09 - Mrs N. Dervish-Uman

This bitch went well from the start in her first run, making good her ground at reasonable pace and with little interference from the handler. She was a little distracted by ground scent at times though generally had good head carriage and style. She acknowledged a recently vacated hare's seat and was steady to the hare going away. There were no birds in her first beat.

Given a second run later in the day under better conditions, she went well with good speed, though her pattern was hardly as good as in the first run. She was quickly rewarded with a find which though empty led on to a further staunch point and produced a cock grouse on command. The bitch was steady to the bird and then produced the hen grouse on command again remaining steady to the flushed bird. In all it was a commendable performance from a young dog.

Graded Good

Piper of Spey Bay, GSP. (B) D.O.B. 26/03/10 - Mr C. Franklin

A little unsure at the start this young bitch sought reassurance from the handler, she did however find her feet after a short time and made some bigger sweeps across the heather as her confidence increased. She did slow a bit at the right of her beat and indicated several times though this never developed into a full point and was probably indicative of ground game in the vicinity. There were no birds on her beat during her first run.

Winners Gallery Field Trials 2010/2011

Her second run was somewhat better than the first, she ran with more confidence and was rewarded with a nice find. Her style on point was dramatic with high head carriage and a 'commanding' point which was very easy on the eye. She produced her pair of birds on command and was steady to flush. This bitch though still very young showed much promise and no doubt will only get better as her confidence increases.

Kenmilquin Fraven, GWP (B) - Ms J. Hay **Graded Good**

An early indication whilst still on the lead led to a firm and steady, point and production for this bitch, which then went on to run in the most determined manner. Exciting to watch and covering large swathes of the hill you just knew she would find birds. After a couple of 'hot' empty points she came up with another productive and produced her pair on command, sitting to flush. She hunted on, maintaining her blistering pace, but despite her efforts no more birds were found (a cock bird did flush from her beat but both bird and dog were unsighted at this point).

This was an experienced dog that knew about grouse and was not going to stop until she found them. However, her pattern did leave a bit to be desired and there were moments that we felt the dog was running rather too much of the show. These points apart she demonstrated her experience on the day in no uncertain manner and we were in no doubt that this was a dog that could find game even in difficult situations.

Chris Gray

Zenta at Trudvang GWP (B) - Mr C. Gray **Graded Very Good**

This stylish bitch showed excellent head carriage and pace, with a flowing gait. She covered an even beat on both sides of her handler and was in tune with her handler throughout her hunt although she back cast a number of times on the left of her beat. She had a staunch point on a pair of grouse which she held for the approach of her handler. The birds flushed and the dog was steady to flush. She was hunted on and continued with the same stylish hunting pattern.

Trudvang Balder GWP (D) - Mr C. Gray **Graded Very Good**

This dog covered a wide beat at a fast pace which slowed at times when he was unsure of what the handler required. His ground treatment was excellent and he indicated birds before having a staunch point on a pair of grouse which he flushed on command and was steady to the birds flying away. He was hunted on a continued to hunt a wide beat with great pace.

Jackie Hay



1st in the Open Field Trial held by the Large Munsterlander Club on 15/10/10, **Wamilanghaar Elixir** handled by Theo Gould.



Wamilanghaar Cara was awarded 2nd in the All Aged stake held by the GLP. Club at Wardy Hill on 29/10/10 and a 3rd in the Open trial held by the HV Society at Bunwell on 25/11/10



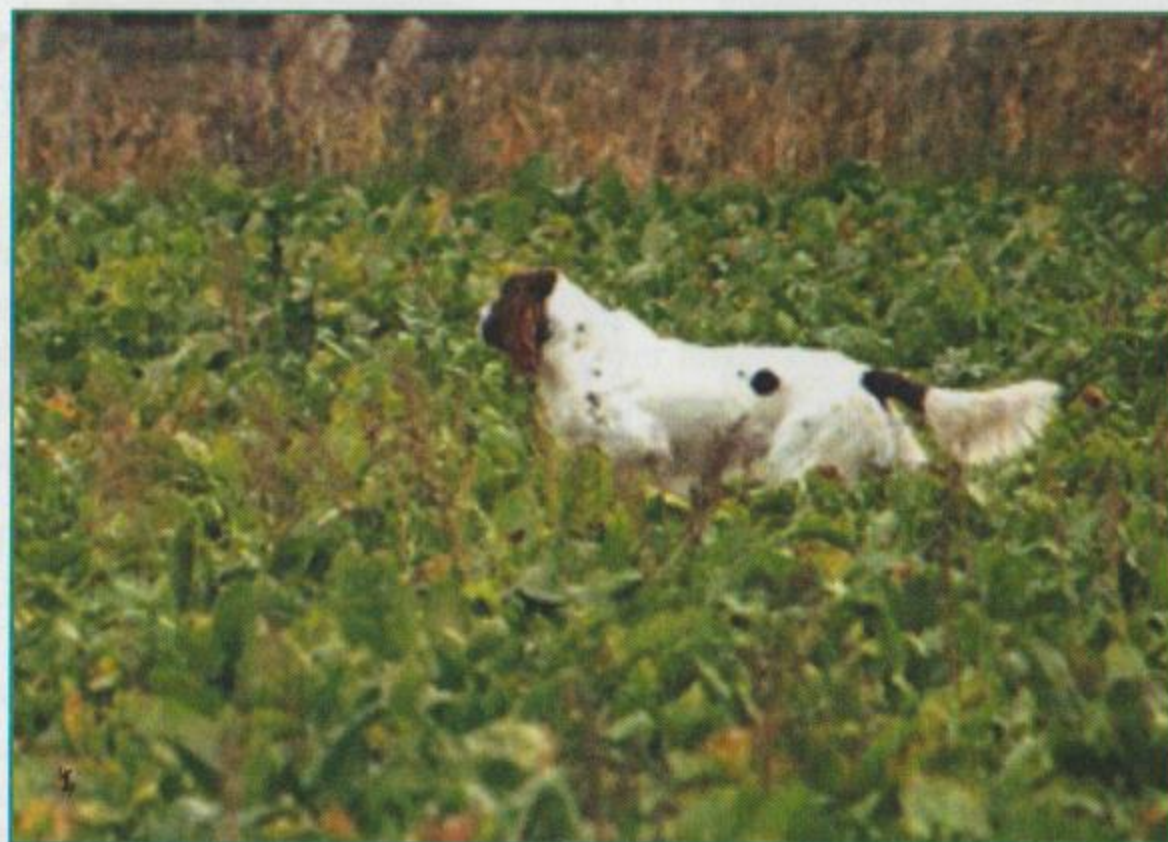
The Bryants Croft Shield

Presented by Rory Major and awarded for excellence in field trials goes this year to Wamilanghaar Cara and Rob Gould

Winners Gallery Field Trials 2010/2011



Questor Harriet was awarded a 1st in the Novice trial held at Croxton on 16/11/10, handled by Eileen Winsor



Wamilanhaar Meadow Pipit was awarded a COM At the All Aged stake at Wardy Hill on 29/10/10, handled by Sarah Bond.

Working Test Sunday 10th July 2011

By kind permission of Mr John Smith we will be holding our annual working test again this year at Gill Mill, Ducklington.

This will be our 10th working test at Gill Mill and as it matures the landscape gets more beautiful. We are looking forward to John and his wife joining us for lunch and presenting the prizes at the end of the day. I am sure you will join me in thanking him for allowing us to come again this year.

Please book in at 9am for 9.30 start. We may have to lock the gates at the entrance to the quarry for security reasons, therefore if you arrive late and the gate is locked you will have to give me a call on the mobile so that somebody can come to let you in. My mobile no is 07711 612145. I will also leave a note at the gate with a number on it to call if you arrive and find the gate locked.

The Club's annual trophy is awarded to 1st place in each class. Tea, coffee and cold drinks will be available free all day but your support for the raffle would be greatly appreciated.

Our grateful thanks from the Club committee go to Mark Firmin, who as usual has negotiated with the owners and managers of Gill Mill on our behalf.

All schedules and entry forms for Club events are downloadable from the web site www.german-longhaired-pointer.org.uk.

For more details see enclosed schedule and entry form.



CRUFTS 2011

BEST OF BREED



Arany's Elko (Mr W L MacAndrew-Uren)

- Special Junior Dog 1st Arany's Falco (Mr L. Wilks & Ms B. Moss)
- Post Graduate Dog 1st Ismael Suyferhout's (Mrs S Tommelein)
- 2nd Questor Izaac (Mr T Croft & Miss J. Hart)
- Open Dog 1st Arany's Elko (Mr W L MacAndrew-Uren)
- 2nd Ir Sh Ch Arany's Dargo Mit Bleyos (Mr G & Mrs T. Boyles)
- 3rd Arany's Faust (Mrs S & Mr J Paton-Bowes & Bowes)

Special Working Gundog - Dog

- 1st Arthur Vom Munstershlag Mit Arany (Mr L. Wilks & Ms B. Moss)
- 2nd Questor Eros at Swifthouse (Mr D. Winser)

Good Citizen Dog Scheme—Dog

- 1st Arany's Faust (Mrs S & Mr J Paton-Bowes & Bowes)

Post Graduate—Bitch

- 1st Arany's Elfie (Miss S Pearse & Mr P Dearing)
- 2nd Arany's Fara (Mrs M K J & Mrs S Palmer)
- 3rd Arany's Flax Mit Sarscottah Ir Jnr Ch. (Ms S S Thomson)
- 4th Arany's Esche (Mrs N Cattermoul)

Open Bitch

- 1st Arany's Elfie (Miss S Pearse & Mr P Dearing)
- 2nd Nancy Vom Auwelt Mit Arany (Mr L. Wilks & Ms B. Moss)
- 3rd Ir Sh Ch Arany's Daja Mit Bleyos (Mr G & Mrs T. Boyles)
- Res Ir Sh Ch Arany's Etta Mit Sarscottah (Ms S. Thompson)

Special Working Gundog—Bitch

- 1st Arany's Baiser (Mr L. Wilks & Ms B. Moss)
- 2nd Arany's Evi (Mr L. Wilks & Ms B. Moss)
- 3rd Questor Harriet (Mr D. & Mrs E. Winser)

Our first Open Show will take place

At

Cottesmore Village Hall
Cottesmore, Oakham, Rutland, LE15 7DH

On Sunday 25th September 2011

Our Judge is Maureen Court

The Club has presented trophies for Best in Show
and Best Puppy to be awarded annually



Best Puppy



Best in Show

Rosettes will be presented to 4th place in each class

All schedules and entry forms for Club events are downloadable from the web site

www.german-longhaired-pointer.org.uk.

or available by email from eileen@winser.go-plus.net

Show Dates for your Diary

Date	Championship Show Society	Contact No
22/07/2011	Leeds Championship Show	01260 252834
02/08/2011	Paignton & District Fanciers Ass	01363 642420
15/08/2011	Bournemouth Canine Association	01258 857721
21/08/2011	The Welsh Kennel Club	01446 792457
28/08/2011	Scottish Kennel Club	01316 653920
04/09/2011	City of Birmingham Canine Ass.	01926 336480
11/09/2011	Richmond Dog Show Society	05602 318955
18/09/2011	Darlington Dog Show Society	01325 312484
24/09/2011	Belfast Dog Show Society	02897 562716
30/09/2011	Driffield Agricultural Society	01623 747006
07/10/2011	South Wales Kennel Association	01792 470417
12/10/2011	Gundog Society of Wales	01792 797404
28/10/2011	Midland Counties Canine Society	01684 572375
12/11/2011	Gundogs Breeds of Scotland	
10/12/2011	Ladies Kennel Association	01276 29495

Date	Open Show Club or Society	Contact No
Jan & Feb	Border Counties Gundog	01697 342746
Apr & Sep	Cornwall District Gundog Soc.	01736 731473
Mar & Nov	Coventry & District Gundog Soc	01527 456175
Jan & July	Dukeries Gundog Club	01623 835694
Apr & Oct	East Anglian Gundog Soc	01406 330160
Apr & Oct	East Riding Gundog Club	01302 834148
Mar & Dec	Goyte Valley Gundog Soc	07900 500085
May & Nov	Gundog Club of North Wales	01745 540432
August	Hampshire Gundog Soc	01202 895628
Feb & Nov	Leicestershire Gundog Soc	01572 747683
Feb & Nov	Merseyside Gundog Club	01704 893128
May & Oct	Mid Hearts Gundog Club	01440 788180
Feb & Oct	Northern Counties Gundog Club	01914 137689
May & Aug	North Riding Gundog Society	01677 450548
May	Shropshire Gundog Soc	01939 290552
June & Nov	South of England Gundog Club	02086 986422
Apr & Oct	South Western Gundog Club	01823 259917
Jan & Sep/Oct	Stoke on Trent & Dist. Gundog Club	01782 502451
Feb, May & Oct	Tay Valley Gundog Ass	01382 611076
Jan & Nov	Waverley Gundog Association	0131 6635832
Apr & Sep	Windsor Gundog Society	01189 543939
Feb & Oct	Yorkshire Gundog Club	01274 601312